

WĀK
THE SALON
HAIR EXTENSIONS

CUSTOMER GUIDE



WĀK

THE SALON

EST 2013

About our Hair

WHAT BRAND DO YOU USE ?

At WĀK The Salon, we've been meticulously sourcing our own premium remy human hair extensions for well over a decade, ensuring that we can deliver the hair of your dreams with beautiful quality and expertise

Our hair is unbranded but let me ask you when searching for fruit and vegetables. Do you look at the name on the plastic packaging? or do you look for the quality and feelEXACTLY we do the same with our hair

No SHOW PONYS here but we can assure you we go to GREAT LENGTHS to ensure that we provide you with AMAZING HAIR extensions and Seamless ones too 😊

WHERE IS YOUR HAIR FROM ?

Our hair extensions are carefully sourced from Myanmar, a region known for its warm, humid climate, which plays a crucial role in the quality of the hair. The consistent moisture and heat in Myanmar ensure that the hair remains strong, silky, and resilient, making it perfect for Australian customers who often deal with similar environmental conditions

With the rise of social media, there are many buzzwords like "Russian" or "European" hair, which often refer more to the location of sourcing rather than hair characteristics,

Simply put imagine if there was hair companies out there marketing the hair as "Australian" think of everybody that you know that lives here and how varied their hair types are

WHAT MAKES WAK DIFFERENT?

Unlike many other salons that "custom order" your hair, we proudly stock all 20+ of our shades in three different methods at all times. This means if there are any variations in how your hair colours , we have alternative colours available to ensure the perfect blend. You never have to worry about being stuck with just one set of extensions—we always have the right match to achieve your desired look!

Our methods

TAPE INS 21.5 INCH

Tapes are a type of permanent hair extension consisting of a 4cm wide weft of hair secured at the top with a sticky tab that is attached to the hair. The adhesive used on tape extensions is a gentle medical adhesive that is waterproof and durable. They can be reused at least once or even more depending on your lifestyle and home haircare regime

INVESTMENT \$

MAINTENANCE 6-8 weeks

LONGEVITY generally 3-4 months

FLAT TRACK WEFTS 21.5 INCH

Flat Track weft extensions are very similar to braided weft hair extensions, but they are much better suited to caucasian fine hair. Flat track weft extensions sit flatter, and are more comfortable on the head as apposed to traditional braided wefts as they are secured to a line of small silicon lined beads which sit comfortably close to the scalp. They can be reused multiple times depending on your lifestyle and home haircare regime

INVESTMENT \$\$

MAINTENANCE 8-12 weeks

LONGEVITY generally 4-8 months

K-TIPS 21.5 INCH

K-Tips are an individually bonded extension applied to the hair using our professional heating tool to maximise your hairs volume colour and/or length. They are lower maintenance extensions as they can be left in for 3-6 months with no maintenance although they can not be reused. They can be very long lasting depending on your lifestyle and home haircare regime

INVESTMENT \$\$\$

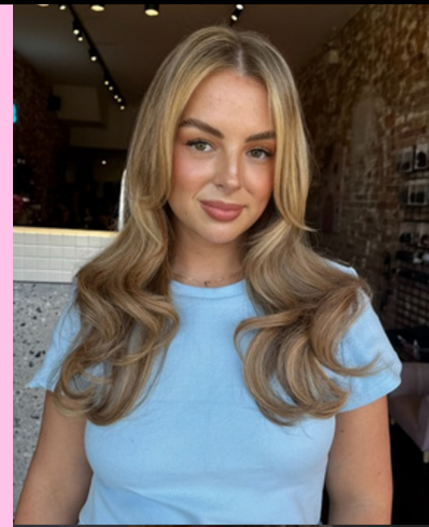
MAINTENANCE 12-20 weeks

LONGEVITY generally 3-5 months

Services

TAPE INS

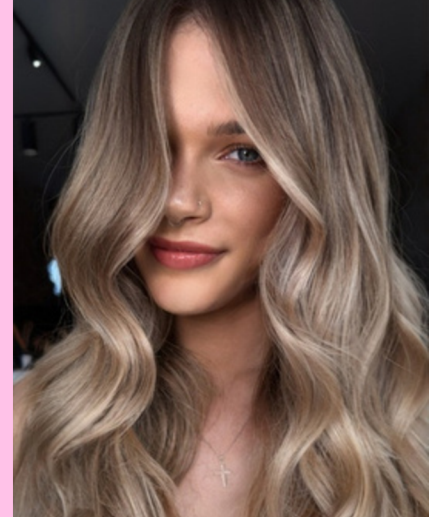
1/2 head 50 grams	From	450
OG Full head 100 grams	From	650
OTT Full head 150 grams	From	850
OMG full head 200 grams	From	1050
25g K-Tip upgrade	From	200



FLAT TRACK SEW IN WEFTS

All weft bookings include take home Haircare valued at \$120

1/2 head 50 grams	From	550
OG Full head 100 grams	From	850
OTT Full head 150 grams	From	1150
OMG full head 200 grams	From	1350
25g K-Tip upgrade	From	200



K-TIPS/KERATIN BONDS

All K-Tip bookings include take home Haircare valued at \$120

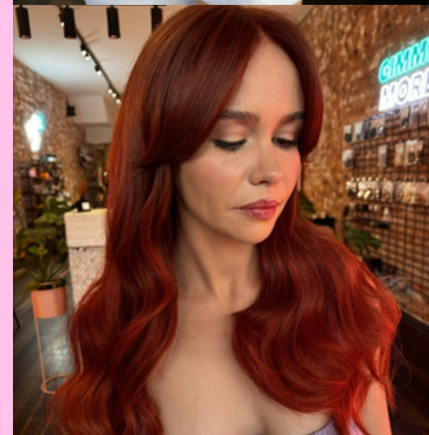
1/4 head 25 grams	From	350
1/2 head 50 grams	From	650
OG full head 100 grams	From	1050
OTT full head 150 grams	From	1300
OMG full Head 200 grams	From	1650



CLIP IN EXTENSION RENTAL

All rental bookings require a deposit of \$100 hire terms are 7 days

14 inch 80 gram volume set	Hire	80
19 inch 180 gram volume set	Hire	120



Maintenance

ADJUSTMENT INCLUSIONS

- 30 mins included Removal time for extensions*
- Double shampoo of natural hair
- Treatment
- Blow dry
- Re install
- Trim of extensions if required
- Styling as desired

*if extra time is required for removal due to in proper care this is charged at \$30 per 15 mins block

TAPE INS

Tape in adjustment's are required every 4-6 weeks

1/2 head 50 grams	From	250
OG Full head 100 grams	From	350
OTT Full head 150 grams	From	375
OMG full head 200 grams	From	450

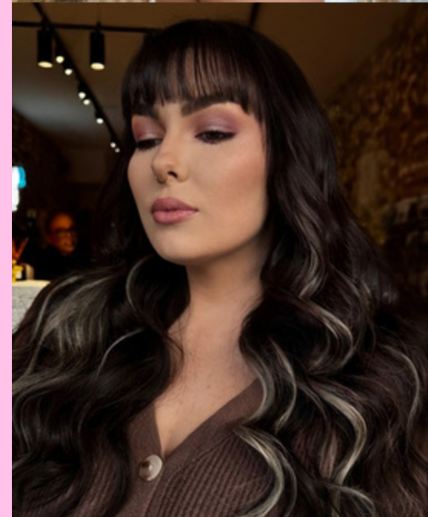
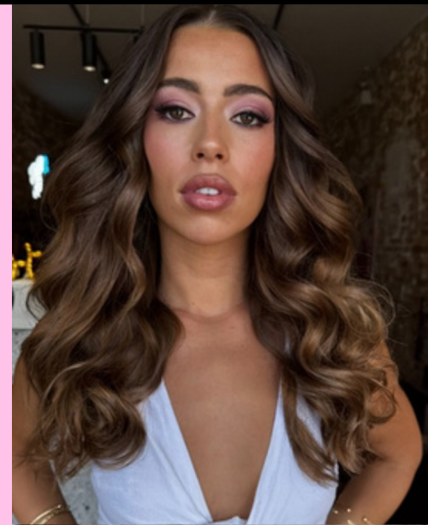
FLAT TRACK SEW IN WEFTS

Weft adjustment's are required every 8-12 weeks

1/2 head 50 grams	From	275
OG Full head 100 grams	From	350
OTT Full head 150 grams	From	375
OMG full head 200 grams	From	400

ADJUSTMENT UPGRADES

Standard toner	60
Root fade toner	70
Basin balayage and toner	FROM 120
50g Tape or weft Upgrade.	200
25g K-Tip upgrade	200



OUR SOLID SHADES

WITH OUR 20 SHADES OF EXTENSIONS INCLUDING 8 PRE FOILED MIXES WE ARE ABLE TO FIND THE PERFECT MATCH FOR MOST HAIR COLOURS, SHADES CAN BE INTERMIXED IN 50 GRAM INCREMENTS
IE. OG FULL HEAD 2 SHADES , OTT FULL HEAD 3 SHADES ETC



Shade 1
PURE BLACK



Shade 1b
DARKEST BROWN



Shade 2
Dark Brown



Shade 3
Chestnut Brown



Shade 4
Neutral Brown



Shade 5
Auburn Brown



Shade 7
Cool Brown



Shade 14
Vanilla Blonde



Shade 24
Golden Blonde



Shade 27
Honey Blonde



Shade 60
Lightest Blonde



Shade 60A
Platinum Blonde

OUR MIXED SHADES

WITH OUR 20 SHADES OF EXTENSIONS INCLUDING 8 PRE FOILED MIXES WE ARE ABLE TO FIND THE PERFECT MATCH FOR MOST HAIR COLOURS, SHADES CAN BE INTERMIXED IN 50 GRAM INCREMENTS
IE. OG FULL HEAD 2 SHADES , OTT FULL HEAD 3 SHADES ETC



Shade 1b/2
Deep Mixed Brown



Shade 2/5
Warm Brown Mix



Shade 7/8
Soft Light Brown Mix



Shade 27/6
Caramel Honey



Shade 7/14
Dirty Blonde Mix



Shade 60/14
Baby Blonde Mix



Shade 60/18
Beachy Blonde Mix

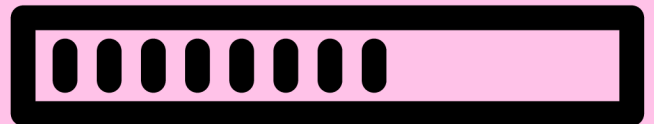


Shade 8T/18/22
Rooted Blonde Mix

Our new shades

WE ARE CONTINUOUSLY WORKING WITH OUR MANUFACTURER TO EXTEND OUR SHADE RANGE

LOADING ...



Shade 30/6
Copper Auburn mix



Shade 24/8
Beige Bronde mix



AFTERCARE

it is suggested that your extensions are not washed or wet for 48 hours after install

PRODUCTS

You wouldn't take out a brand new car uninsured.....so why would you do any different with your new luscious locks ? A good home haircare regime is paramount to keep your hair in optimum condition

We will recommend a personalised haircare regime to suit your individual hair needs but at bare minimum you should be using Sulphate free Shampoo & Treatment , Leave in conditioner and heat protection & oil and avoid protein products

BRUSHING & DETANGLING

More hair means more work so it is required that you brush your hair at least twice a day, After all install appointments you will be gifted with a specially designed extensions brush which will be the perfect companion for keeping your hair detangled and neat & tidy throughout the day

STYLING

Unfortunately, extensions are not wash-and-wear, we recommend heat styling (180 degrees max) them to blend perfectly with your natural hair, even if it's just once a week, but always use heat protection.

BEDTIME

You are required to sleep with your hair in a loose plait secured over one shoulder with a scrunchie to keep your hair neat and tidy as you sleep

It is advised to NEVER sleep with wet hair, So if this is a habit you are used to its time to change it up as with extensions this is simply not an option as it Creates Tangles and dries out the extensions extremely fast

SWIMMING

Swimming in general (salt water or chlorine) will slightly damage your extensions so where possible we suggest not to get your hair extensions when wet

But if you insist there is a few tips that will reduce the chances of damage

- Dampen your hair prior to reduce the amount of salt water or chlorine your hair can absorb
- Apply a COASTAL GIRL through the mids and ends for extra protection
- Always swim with a loose Plait and thoroughly rinse and shampoo and treat your hair as soon as you exit the water to remove all the salt and or chlorine

Included Take home regime

FOR WEFT AND KERATIN BOOKINGS

WĀK
THE SALON

THERE IS A PLETHORA OF HAIRCARE AVAILABLE ON THE MARKET AND WE CANT COMMENT ON ALL OF THEM ALTHOUGH WE CAN PROVIDE GUIDANCE ON OUR TRIED AND TRUE RECOMMENDED RETAIL FOR OUR EXTENSIONS

evo™

BARE NECESSITIES AT HOME HAIRCARE

THIS HOME HAIRCARE REGIME COVERS THE BASICS TO KEEP YOUR NEW LOCKS IN OPTIMUM CONDITION *



SHAMPOO



TREATMENT



LEAVE IN



DETANGLING BRUSH

• THE RECOMMENDED PRODUCTS MAY VARY AND ARE DEPENDANT ON WHAT IS BEST SUITED TO YOUR HAIRS NEEDS

OPTIONAL UPGRADES

THESE OPTIONAL EXTRAS WILL HELP YOU TAKE EXTRA CARE OF YOUR NEW HAIR AND STRETCH OUT THE TIME BETWEEN WASH DAYS BY GENTLY REFRESHING THE ENDS AND ABSORBING EXCESS OIL THROUGH THE ROOTS OR EVEN GIVING YOUR HAIR THAT EXTRA HYDRATION PRE WASH DAY



DRY SHAMPOO



HAIR SEALER



HEAT PROTECTION



SHINE SERUM

20% OFF

evo™

IF PURCHASED
DURING A INSTALL
OR ADJUSTMENT
BOOKING

**WANT TO TAKE THE
NEXT STEP ?**

READY TO GO?

POP US A MESSAGE TO
BOOK IN YOUR APPOINTMENT

STILL UNSURE ?

BOOK IN FOR A FREE NO
OBLIGATION CONSULTATION

WĀK
THE SALON